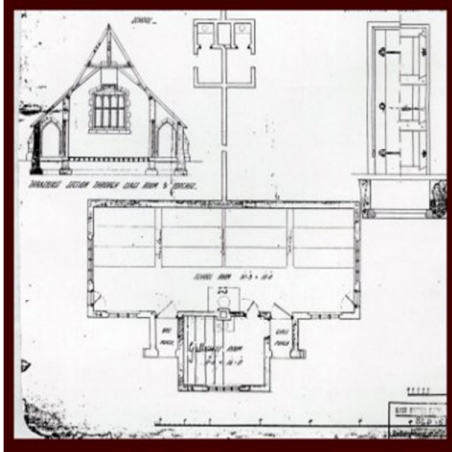


## 1856-1875 Including Original School Plans

The original school building goes back to 1856. Below are some of the plans together with one showing the elevation.

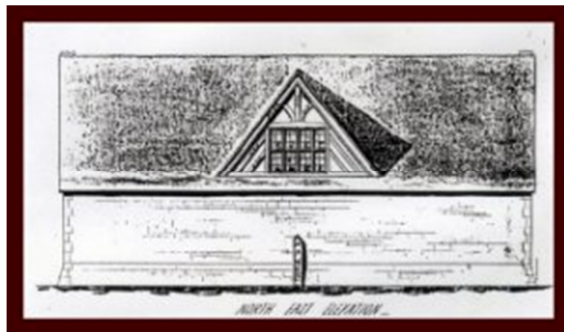


The school was built in 1857. Originally it was a National School, under the auspices of the National Society for Promoting the Education of the Poor in the Principles of the Established Church. The original building consisted of two rooms, with rows of tiers on the East wall.

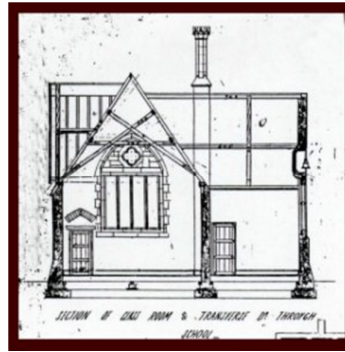


*(south-west elevation)*

Children entered the classroom through the two porches which are still in use today. Boys used one porch and girls used the other.

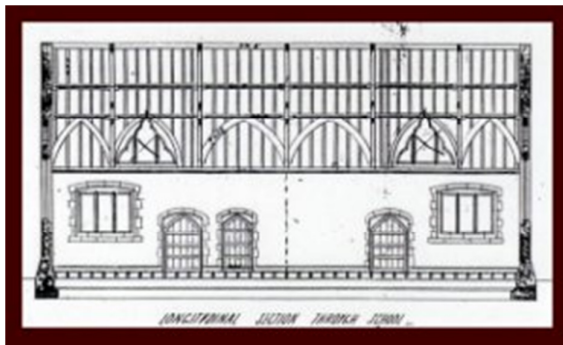


*(north-east elevation)*



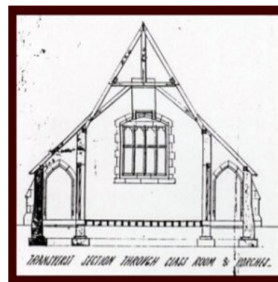
*(A section of the classroom)*

At first Buxted School was known as the Buxted National Schools, because the Boys', Girls' and Infants' Schools were regarded as separate entities.



*(A longitudinal section through the building)*

George and Ann Bryant were in charge of the National Schools for the first five years and they were succeeded by Alfred and Fanny Lashmar. In 1867 Oliver Simkin and his wife were appointed Master and Mistress, to be followed in 1870 by Thomas Frisby and his wife Zipporah Ann.



*(A transverse section through the classroom and porches)*

J. Barker was the Headteacher from 1872-1873, and he was followed, from 1873-1875, by F.A. Lidbury.